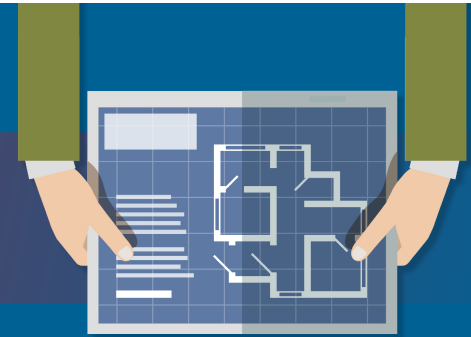


#BIMfographic

# What is BIM-to-BEM?



## Building Information Modelling

creates the virtual model of a building including graphical and non-graphical information.

## Building Energy Modelling

digitally simulates and analyse the building energyconsumption taking as input a description of a building including geometry, construction materials, HVAC, component efficiencies, and control strategies.



This project has received funding from the European Union's Horizon 2020 research and innovation programme under the grant agreement No. 820553. The content of this infographic reflects only the authors' view and the Commission are not responsible for any use that may be made of the information it contains. Some of the design elements of this infographic was designed using the resources from Freepik.com and Flaticon.com